

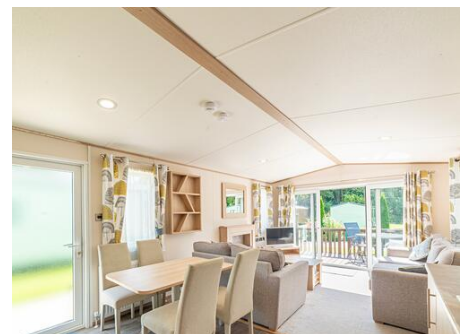
# Discover Parks

*Where life feels right*

## ABI Beverley. 2 Bedrooms 39 x 12

- Pre-owned model
- Front patio doors
- Feature fireplace
- Free standing furniture
- En-suite bathroom
- Family shower room
- Great value

£47,995



### ABI Beverley

At Arrow Bank Country Holiday Park

Positioned on a beautifully appointed plot with its own front deck, the ABI Beverley's elevated setting and thoughtfully planned layout makes this a really stunning home.

The open-plan living area is bright, airy with sliding patio doors that frame the view and open onto the front deck. In the lounge, two generously proportioned sofas provide ample seating, offering both comfort and elegance.

The kitchen and dining area continues the sense of space and light. The dining table is perfectly suited to leisurely meals and social gatherings, seating six with ease. The kitchen itself is both functional and stylish, featuring modern cabinetry and high-quality integrated appliances, including a built-in microwave and fridge freezer.

A twin bedroom, located near the family shower room, provides a comfortable space for guests or family members. The master suite is a peaceful and spacious retreat, featuring a well-appointed en-suite with a full-size bath and overhead shower. Ample wardrobe storage ensures everything has its place, maintaining the clean, uncluttered aesthetic throughout.

For more information please contact our Ownership Team today on 07379 789 312 or 01568 708326 or contact us

